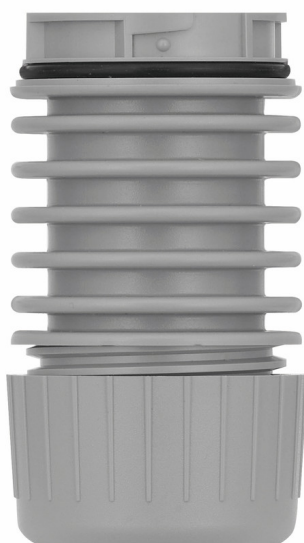


KombiSIGN 40 / DesignLOOK

## Adapter f. tube mount. RM GY



<b>Part No.:</b>	<b>630.730.00</b>
<b>Series:</b>	<b>KombiSIGN 40</b>



### MECHANICAL DATA

Height	80 mm
Diameter	40 mm
Materials	PC
Housing colour	Grey
Protection category	IP66 IP69K
Cable entry	Through hole
Cable entry maximum	d = 9 mm
Type of fixing	Tube mounting
Working temperature minimum	-30°C
Working temperature maximum	+60°C
Weight with packaging	45 g
Product weight	45 g

### ELECTRICAL DATA

Pollution degree	3
------------------	---

### APPROVAL DATA

Conforms with CE	No
Conforms with RoHS directive	Fulfills substance restriction
WEEE	No
Conforms with ATEX-directive	No
Conforms with CCC	No
Conforms with UL	cULus
UL Type Rating	Type 12
Conforms with FCC	No
Conforms with IC	No
EAC certificate available	Yes
Conforms with UKCA (Importer)	No
Conforms with CMIM	No
Conforms with AS-I	No
ICAO Certification	No
Conforms with DNV	No
Conforms with RoHS CN	No
Conforms with VdS	No

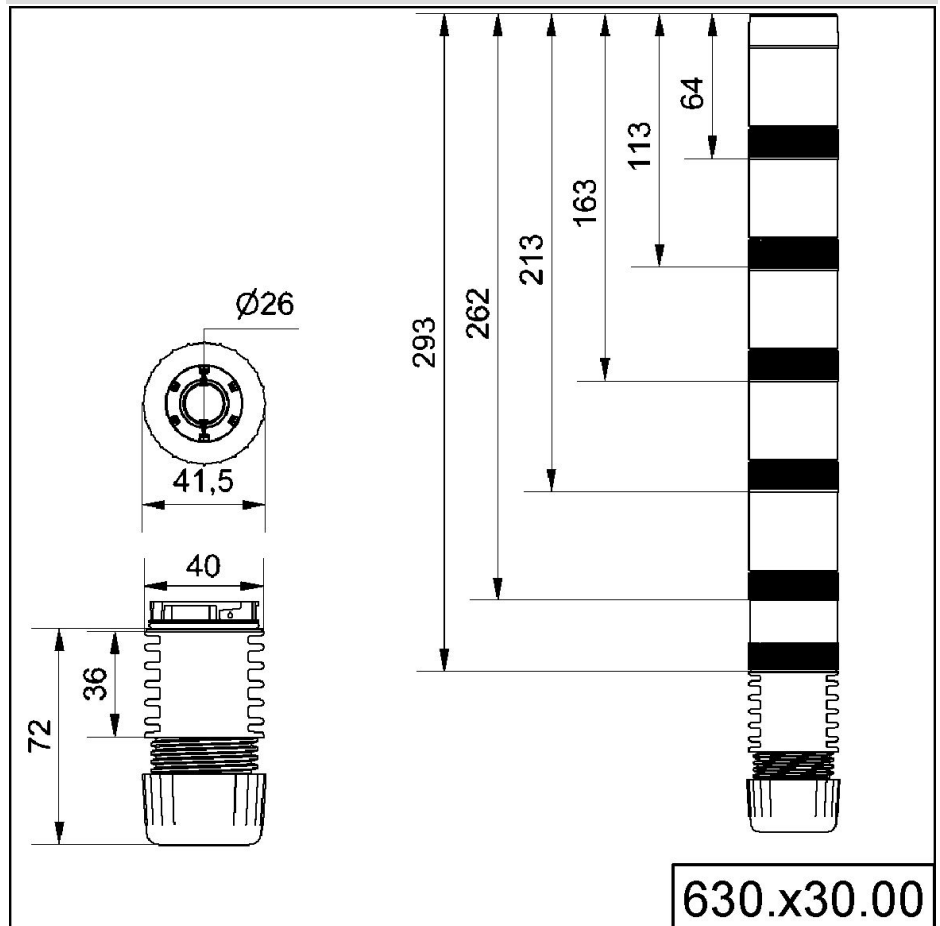


For additional installation and mounting information, refer to the appropriate user guide at [www.werma.com](http://www.werma.com). This printed copy is for information only and is subject to alteration.

KombiSIGN 40 / DesignLOOK

**Adapter f. tube mount. RM GY**

**DRAWING**



For additional installation and mounting information, refer to the appropriate user guide at [www.werma.com](http://www.werma.com). This printed copy is for information only and is subject to alteration.