

Signal Beacons and Traffic Lights / Traffic Lights

**Traffic Light 12-230VAC/DC RD/GN**



**Part No.:** 890.030.00

**MECHANICAL DATA**

Length	154 mm
Height	349 mm
Diameter	150 mm
Materials	PC PC/ABS
Dome colour	Green Red
Housing colour	Grey
Protection category	IP65
Connection	Insulation-displacement contac
cross-sectional area minimum	0,75mm <sup>2</sup> / 19AWG
cross-sectional area maximum	1,50mm <sup>2</sup> / 16AWG
Cable entry	Screwed cable gland
Cable entry minimum	d = 5 mm
Cable entry maximum	d = 8 mm
Tension relief	Present (conforms to VDE)
Type of fixing	Base mounting Wall mounting
Working temperature minimum	-30°C
Working temperature maximum	+50°C
Weight with packaging	1204 g
Product weight	1067 g

**ELECTRICAL DATA**

Operating voltage	12-230V
Operating voltage type	AC/DC
Protection class	Protection class 2
Pollution degree	3
Overvoltage category	II
Isolation voltage	Ui = 250V; Uimp = 2.500V
Power illuminant	Max. 25W

**OPTICAL DATA**

Light colour	Green Red
Service life optical	depends on bulb
Lamp fitting/socket	E27

**APPROVAL DATA**

Conforms with CE	No
Conforms with RoHS directive	Fulfills substance restriction



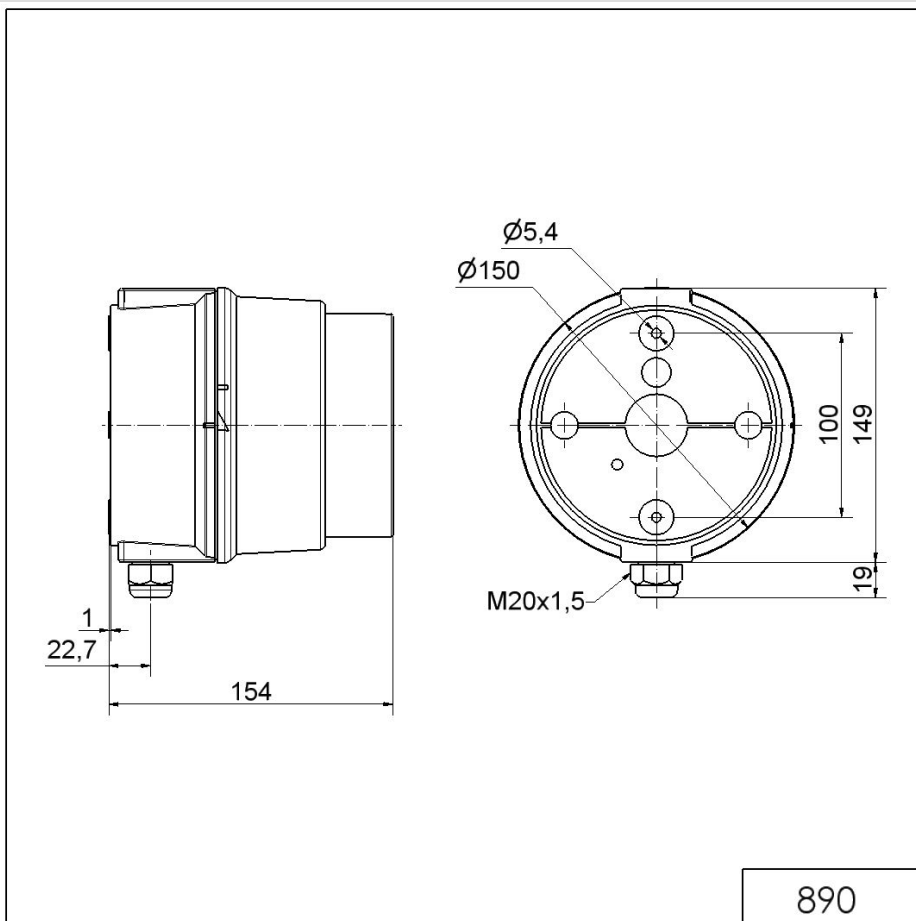
For additional installation and mounting information, refer to the appropriate user guide at [www.werma.com](http://www.werma.com). This printed copy is for information only and is subject to alteration.

## Signal Beacons and Traffic Lights / Traffic Lights

### Traffic Light 12-230VAC/DC RD/GN

WEEE	Yes
Conforms with ATEX-directive	No
Conforms with CCC	No
Conforms with UL	No
Conforms with FCC	No
Conforms with IC	No
EAC certificate available	Yes
Conforms with AS-I	No
ICAO Certification	No
Conforms with DNV	No
Conforms with RoHS CN	No
Conforms with VdS	No

#### DRAWING



! For additional installation and mounting information, refer to the appropriate user guide at [www.werma.com](http://www.werma.com). This printed copy is for information only and is subject to alteration.