

Signal tower / Pre-assembled Signal Tower Fixing bracket BK



| | |
|------------------|---------------------|
| Part No.: | 975.883.41 |
| Series: | KombiSIGN 72 |

MECHANICAL DATA

| | |
|-----------------------|--------|
| Length | 138 mm |
| Width | 125 mm |
| Height | 50 mm |
| Housing colour | Black |
| Weight with packaging | 336 g |
| Product weight | 336 g |

APPROVAL DATA

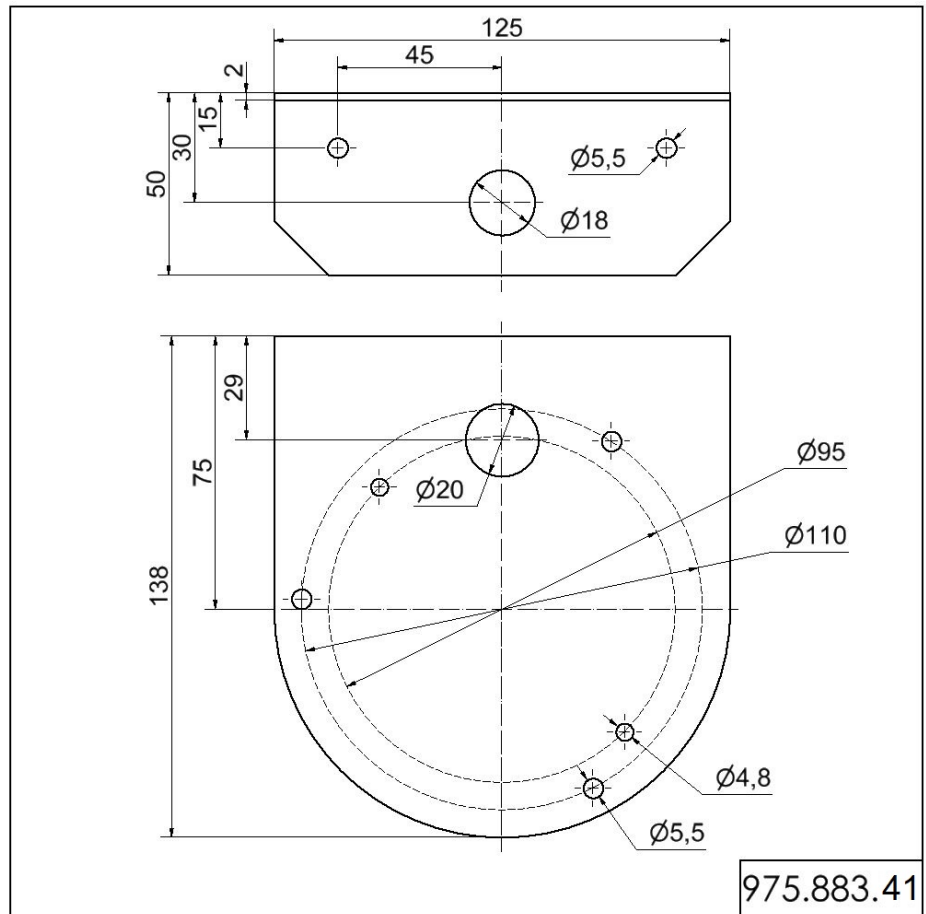
| | |
|-------------------------------|--------------------------------|
| Conforms with CE | No |
| Conforms with RoHS directive | Fulfills substance restriction |
| WEEE | No |
| Conforms with CCC | No |
| Conforms with FCC | No |
| Conforms with IC | No |
| EAC certificate available | No |
| Conforms with UKCA (Importer) | No |
| Conforms with CMIM | No |
| Conforms with AS-I | No |
| Conforms with DNV | No |
| Conforms with RoHS CN | No |
| Conforms with VdS | No |



For additional installation and mounting information, refer to the appropriate user guide at www.werma.com. This printed copy is for information only and is subject to alteration.

Signal tower / Pre-assembled Signal Tower
Fixing bracket BK

DRAWING



For additional installation and mounting information, refer to the appropriate user guide at www.werma.com. This printed copy is for information only and is subject to alteration.